



# MONTHLY MEMBERSHIP PROGRESS REPORT

District 2 E1

Results as of: 5/31/2015

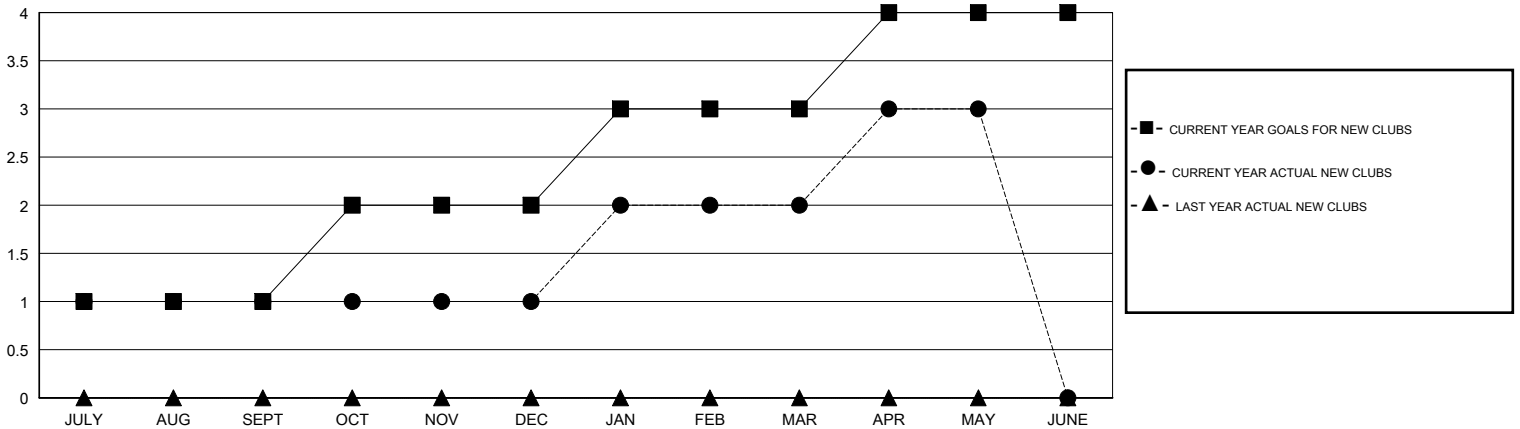
GMT: HAL GRIFFIN

LOCATION TEXAS

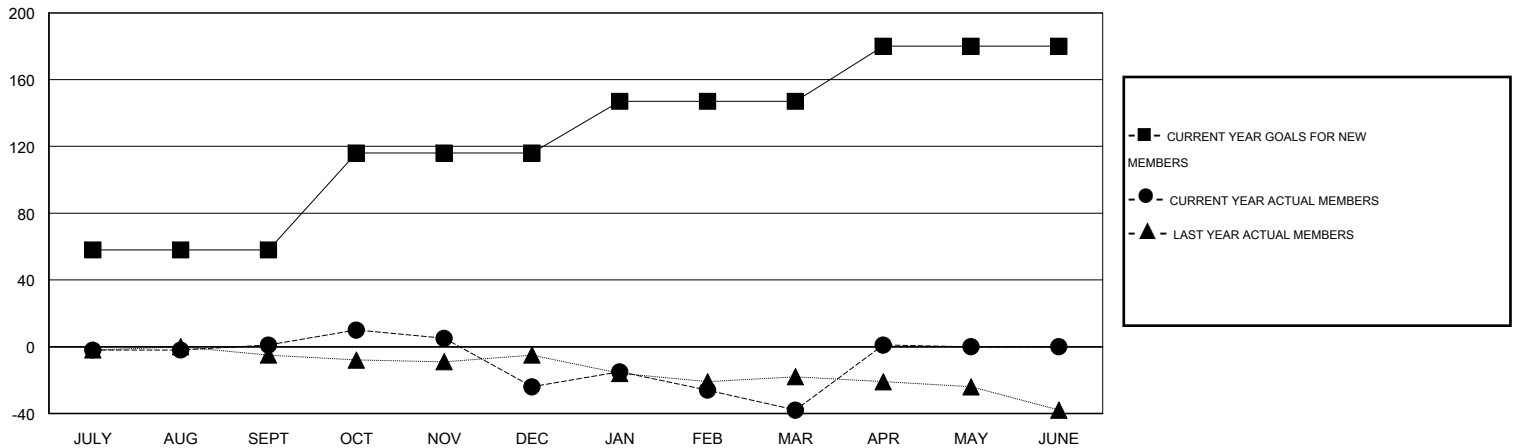
GMT CA 1

Clubs					Members				
RESULTS FOR 2014-2015					RESULTS FOR 2014-2015				
QUARTER	NEW CLUB GOAL	NEW CLUBS	DROPPED CLUBS	NET GAIN/LOSS	QUARTER	NEW MEMBER GOAL	CHARTER AND NEW MEMBERS ADDED	DROPPED MEMBERS	NET GAIN/LOSS
JULY/AUG/SEPT	1	1	2	-1	JULY/AUG/SEPT	58	46	45	1
OCT/NOV/DEC	1	0	1	-1	OCT/NOV/DEC	58	43	68	-25
JAN/FEB/MAR	1	1	0	1	JAN/FEB/MAR	31	59	73	-14
APR/MAY/JUNE	1	1	0	1	APR/MAY/JUNE	33	60	22	38

GOALS AND ACTUAL NEW CLUBS CUMULATIVE



GOALS AND ACTUAL MEMBERS CUMULATIVE



DROPPED CLUBS: 3	33 CLUBS OF 58 ADDED 1 OR MORE NEW MEMBERS	<u>GENDER DISTRIBUTION</u>	
		MALE	965 (73.33%)
<u>DROPPED MEMBERS</u>	<a href="#">CLICK HERE FOR HEALTH ASSESSMENT DATA</a>	FEMALE	351 (26.67%)
DECEASED		19	FAMILY UNIT MEMBERS
CLUB CANCELLED	41	HEAD OF HOUSEHOLD	61
OTHER	148	NON-HEAD OF HOUSEHOLD	63
<b>TOTAL</b>	<b>208</b>		